



System <ul style="list-style-type: none"> CPU: Bach SoC Flash: 8MB RAM: 64MB+32MB Embedded OS: Linux 2.6 	Alarm and Event Management <ul style="list-style-type: none"> Triple-window video motion detection Tamper detection One D/I and one D/O for external sensor and alarm Event notification using HTTP, SMTP, or FTP Local recording of MP4 file
Lens <ul style="list-style-type: none"> Board lens, vari-focal, f=3.3 ~ 12 mm, F1.4 (wide), F2.9 (tele), focus range: 50 cm to infinity (FD7141) Board lens, vari-focal, f=9 ~ 22 mm, F1.4 (wide), F1.6 (tele), focus range: 100 cm to infinity (FD7141V) Removable IR-cut filter for day & night function 	On-board Storage <ul style="list-style-type: none"> SD/SDHC card slot Stores snapshots and video clips
Angle of view <ul style="list-style-type: none"> 23.9° ~ 89.8° (horizontal) (FD7141) 13.1° ~ 32.1° (horizontal) (FD7141V) 17.9° ~ 63.6° (vertical) (FD7141) 9.8° ~ 23.3° (vertical) (FD7141V) 	Security <ul style="list-style-type: none"> Multi-level user access with password protection IP address filtering HTTPS encrypted data transmission
Shutter Time <ul style="list-style-type: none"> 1/30 sec. to 1/15000 sec. 	Users <ul style="list-style-type: none"> Camera live viewing for up to 10 clients
Image Sensor <ul style="list-style-type: none"> 1/3.3" Wide Dynamic Range CMOS sensor in 720x480 resolution 	Dimension <ul style="list-style-type: none"> Ø 170 mm x 133 mm
Minimum Illumination <ul style="list-style-type: none"> 0.68 Lux / F1.4 (FD7141) 8.5 Lux / F1.4 (FD7141V) 0 Lux / F1.4 (IR LED on) 	Weight <ul style="list-style-type: none"> Net: 2164 g
IR Illuminators <ul style="list-style-type: none"> IR LED x 12 (850 nm) Effective up to 15 meters 	LED Indicator <ul style="list-style-type: none"> System restore status indicator
Video <ul style="list-style-type: none"> Compression: MJPEG & MPEG-4 Streaming: Simultaneous dual-stream MPEG-4 streaming over UDP, TCP, HTTP or HTTPS MPEG-4 multicast streaming MJPEG streaming over HTTP or HTTPS Supports 3GPP mobile surveillance Frame rates: <ul style="list-style-type: none"> MPEG-4: 720x480 up to 25 fps 360x240 up to 30/25 fps MJPEG: 720x480 up to 30/25 fps 	Power <ul style="list-style-type: none"> 12V DC 24V AC Consumption: Max. 7.5 W Max. 10 W (with heater) 802.3af compliant Power-over-Ethernet
Image settings <ul style="list-style-type: none"> Adjustable image size, quality, and bit rate Time stamp and text caption overlay Flip & mirror Configurable brightness, contrast, saturation, sharpness, white balance, and exposure AGC, AWB, AEC Automatic, manual or scheduled day/night mode Supports privacy masks 	Housing <ul style="list-style-type: none"> Metal base and polycarbonate transparent cover Vandal-proof: 1000 kg Weather-proof IP66-rated Housing
Audio <ul style="list-style-type: none"> Compression: <ul style="list-style-type: none"> GSM-AMR speech encoding, bit rate: 4.75 kbps to 12.2 kbps MPEG-4 AAC audio encoding, bit rate: 16 kbps to 128 kbps Interface: <ul style="list-style-type: none"> External microphone input Audio output Supports two-way audio via SIP protocol Supports audio mute 	Approvals <ul style="list-style-type: none"> CE, LVD, FCC, VCCI, C-Tick
Networking <ul style="list-style-type: none"> 10/100 Mbps Ethernet, RJ-45 Protocols: IPv4, TCP/IP, HTTP, HTTPS, UPnP, RTSP/RTP/RTCP, IGMP, SMTP, FTP, DHCP, NTP, DNS, DDNS, and PPPoE 	Operating Environments <ul style="list-style-type: none"> Temperature: -20 ~ 60 °C (-4 ~ 140 °F) Humidity: 20 % ~ 95% RH
	Viewing System Requirements <ul style="list-style-type: none"> OS: Microsoft Windows 2000/XP/Vista Browser: Internet Explorer 6.x or above Cellphone: 3GPP player Real Player 10.5 or above Quick Time 6.5 or above
	Installation, Management, and Maintenance <ul style="list-style-type: none"> 3-axis mechanism for flexible ceiling and wall mount installation Drop-ceiling mount installation Installation Wizard 2 16-CH recording software Supports firmware upgrade
	Applications <ul style="list-style-type: none"> SDK available for application development and system integration
	Warranty <ul style="list-style-type: none"> 24 months

All specifications are subject to change without notice. All other trademarks are owned by their respective companies.

Fixed Dome Network Camera

FD7141

Outdoor · WDR · Tamper Detection



VIVOTEK FD7141 is a professional-grade vandal- and weather-proof fixed dome network camera integrating all the features required for outdoor surveillance into a discreet, compact package. FD7141's IP66 rating ensures protection from water and dust and its vandal-proof design provides additional protection in high risk environments. With built-in heater and fan, FD7141 can operate in an extended temperature range required in many of today's installations.

Boasting a Wide Dynamic Range CMOS sensor, FD7141 can cope with challenging lighting conditions and provide image quality superior to other products in its class. FD7141 delivers true day and night functionality with a removable IR-cut filter and built-in IR illuminators. The 3-axis rotation design makes the installation of FD7141 suitable for both wall and ceiling mount options.

The FD7141 supports tamper detection, which will detect video loss from events such as blockage or spray-painting. FD7141 also incorporates advanced features including simultaneous dual streams, 802.3af compliant PoE, two-way audio via SIP protocol, built-in SD/SDHC card slot, drop-ceiling mount, and HTTPS encrypted data transmission for a robust outdoor security solution.



A Powerful Outdoor Surveillance Solution

Adapted for High-Contrast Lighting Conditions

FD7141 offers WDR (Wide Dynamic Range) functionality that delivers identifiable images in high-contrast environments such as backlight, glare and light reflection. By capturing and combining information from the darkest and brightest areas, FD7141 generates images that accurately reproduce fine details appearing in the actual scene.



WDR



Regular

Maximum Protection against Natural Threats

FD7141's weather-proof IP66-rated housing provides protection from extreme weather conditions, dust, and moisture.



Weather-proof

Intelligent Tamper Detection

FD7141 offers tamper detection, which prevents the interruption of monitoring and recording due to camera tampering events such as blockage and spray-painting. By detecting scene changes caused by camera tampering, FD7141 is a smart solution for vandalism-prone areas such as train stations or prisons.



Blockage



Spray-painting

Rugged Design for High Risk Areas

Equipped with a vandal-proof housing, FD7141 provides protection against vandalism making it suitable for high-risk environments. The metal base and polycarbonate cover enable FD7141 to withstand impact of up to 1,000 kg. Tamper proof screws are provided to prevent dismantling.



Vandal-proof housing

Consistent Image Quality Day and Night

FD7141 delivers true day & night functionality with a built-in removable IR-cut filter and IR illuminators. By day the IR-cut filter screens out infrared light to reduce color distortion and at night the filter is removed and IR illuminators are activated to enhance light sensitivity.



Day



Night



SD/SDHC Card

FD7141 features an SD/SDHC card slot to provide short term and portable video storage on SD/SDHC cards.



Heater & Fan, Supported by PoE

With a heater and fan incorporated in the housing, the FD7141 can operate in temperatures ranging from -20 to 60 ° C and humidity from 20 to 95% RH.



Flexible Installation



Ceiling Mount



Wall Mount



Gooseneck Wall Mount



Pole Mount



Drop-Ceiling Mount



Pendant Mount



Corner Mount

Versatile Applications



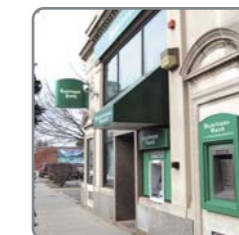
Parking Lots



Schools



Airports



Banking



Loading Areas

Product Features

- Wide Dynamic Range CMOS Sensor
- 3-axis Mechanical Design for Ceiling/Wall Mount Installation
- 3.3 ~ 12 mm Vari-focal Lens
- Detects Tampering from Blockage or Spray-painting
- Built-in IR Illuminators, effective up to 15 Meters
- Removable IR-cut Filter for Day & Night Function
- Weather-proof IP66-rated Housing
- Real-time MPEG-4 and MJPEG Compression (Dual Codec)
- Supports Dual Streams Simultaneously
- Built-in 802.3af Compliant PoE (Power-over-Ethernet)
- Two-way Audio via SIP Protocol
- Built-in SD/SDHC Card Slot for On-board Storage
- Built-in Heater and Fan, supported by PoE

