

# Mega-Pixel Network Camera Quick Installation Guide

English | 繁中 | 简中 | 日本語 | Français | Español | Deutsch | Português | Italiano | Türkçe | Polski | Русский



## IP7139

This guide describes the basic functions of IP7139.

All detailed information is described in the user's manual.





## Warning Before Install

- **Power off the Network Camera as soon as it is found smoking or smelt unusual.**



Contact your distributor when such cases happen.

- **Keep the Network Camera away from the water. If the Network Camera is wet, power off immediately.**

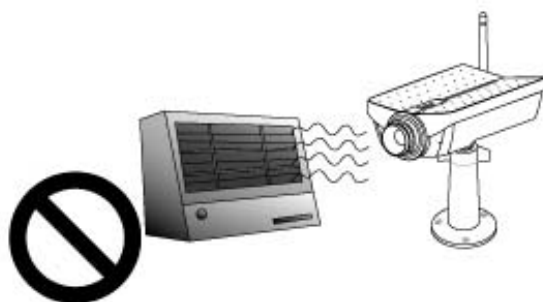


Contact your distributor when such cases happen.

- **Do not place the Network Camera around the heat sources, such as television or oven.**



- **Refer to your user's manual for the operating temperature.**



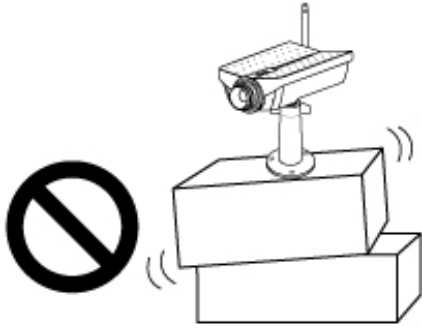
- **Keep the Network Camera away from the direct sunlight.**



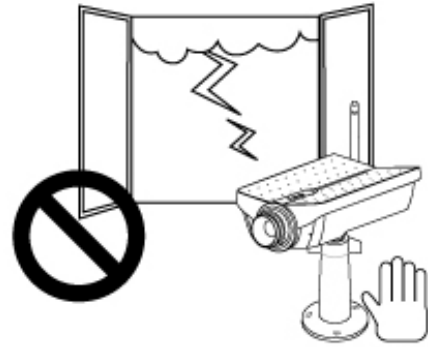
- **Do not place the Network Camera in high humid environments.**



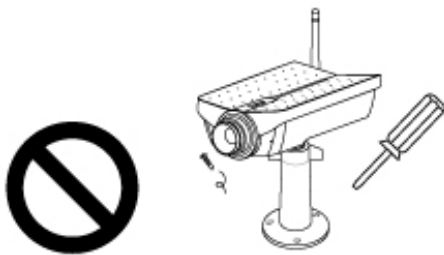
- **Do not place the Network Camera on unsteady surfaces.**



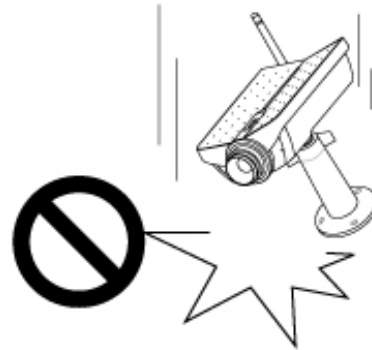
- **Do not touch the Network Camera when it's lightning.**



- **Do not disassemble the Network Camera.**



- **Do not drop the Network Camera.**



- **Do not insert any object into the Network Camera, such as needles.**

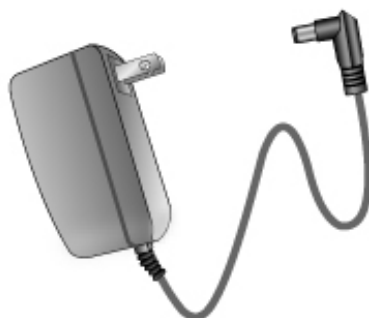


# 1 Check Package Contents

## ● IP7139



## ● Power adapter



## ● Camera stand



## ● Software CD



## ● Quick installation guide



## ● Warranty card

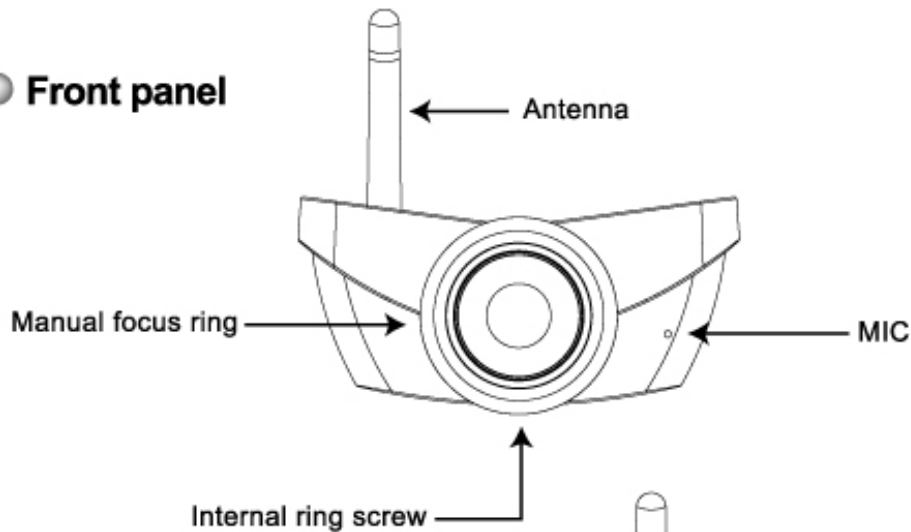


## ● Antenna

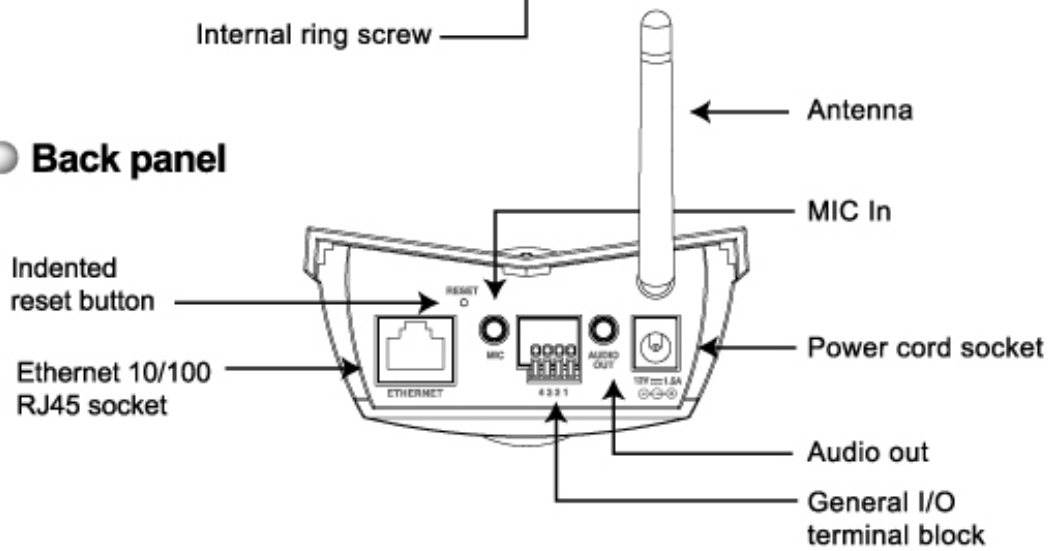


## 2 Physical Description

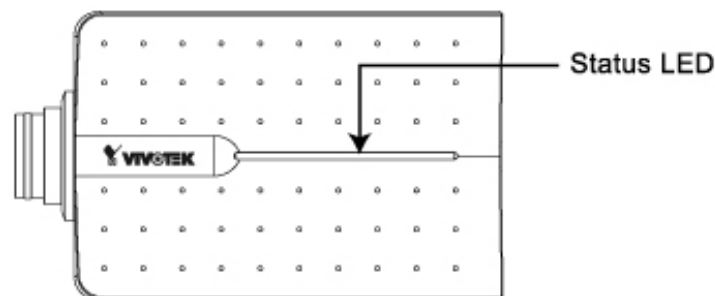
### ● Front panel



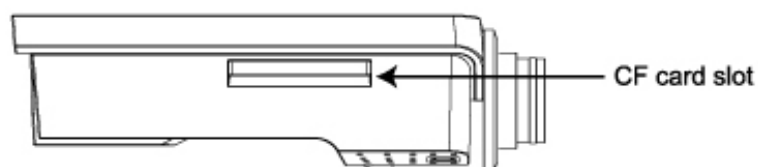
### ● Back panel



### ● Up Cover



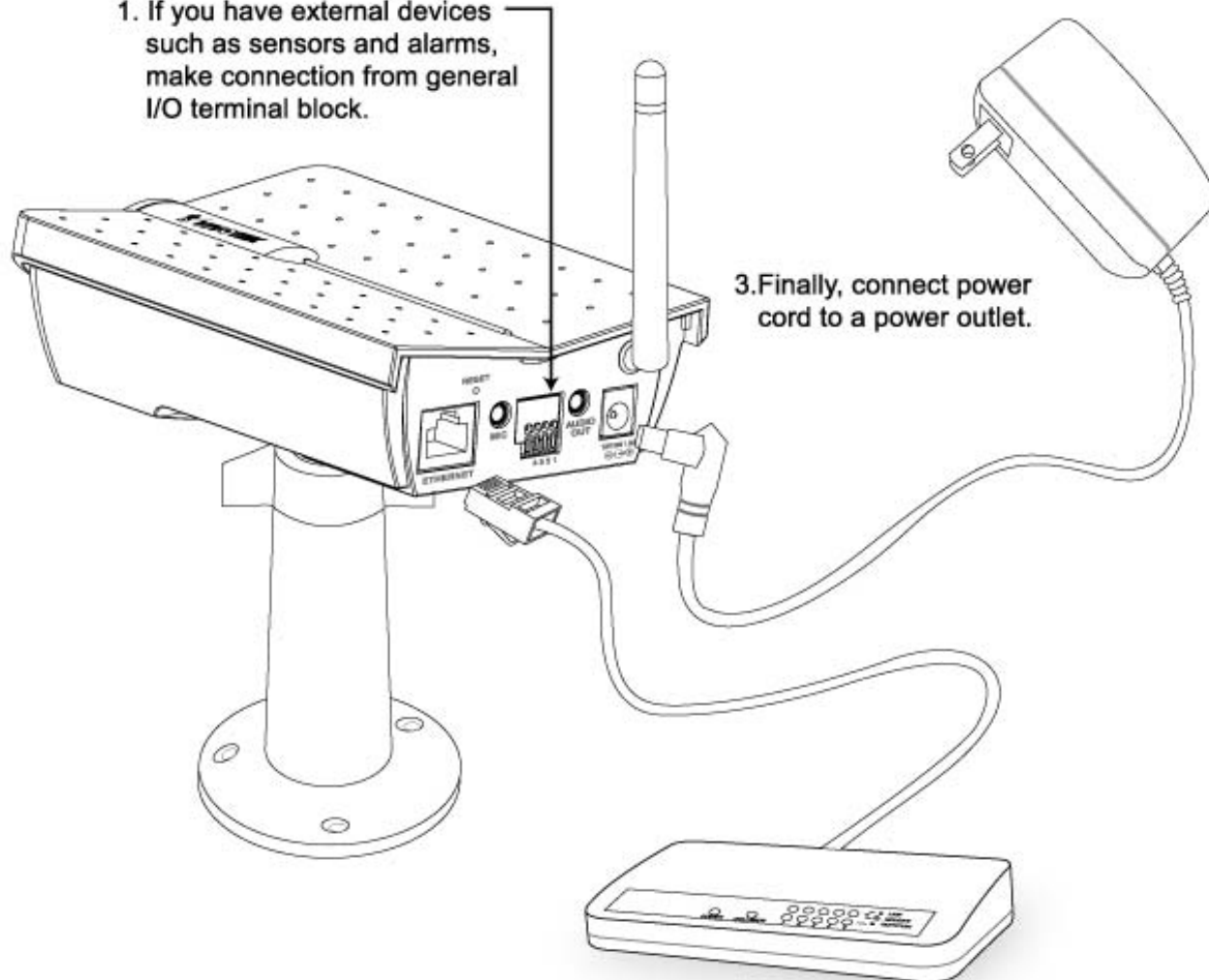
### ● CF card slot



### 3 Make Connections

#### ● Install your Network Camera in Ethernet network

1. If you have external devices such as sensors and alarms, make connection from general I/O terminal block.



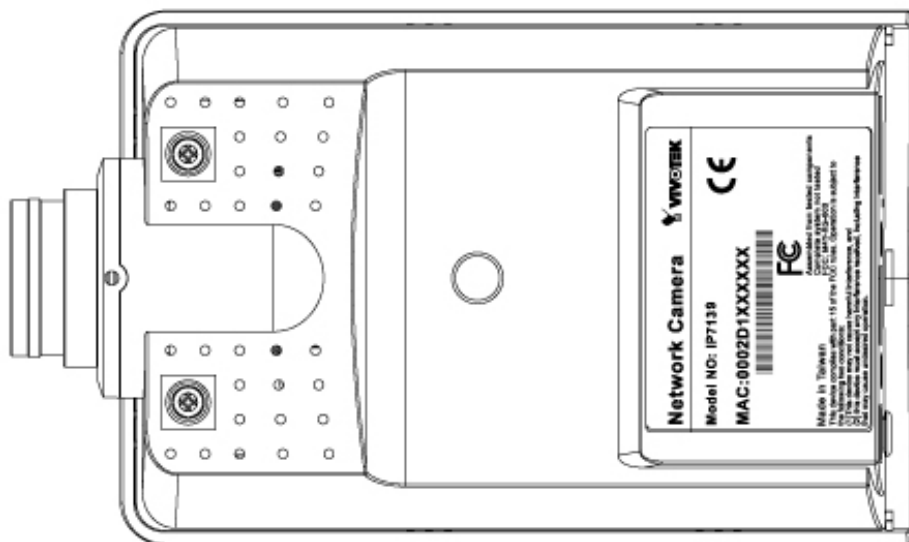
3. Finally, connect power cord to a power outlet.

2. Use Ethernet cable to make connection from Ethernet 10/100 RJ45 socket to the hub.

\* Use Category 5 Cross Cable when Network Camera is directly connected to PC.

## 4 Assign IP Address

**A** Note the serial number from the label on the unit.

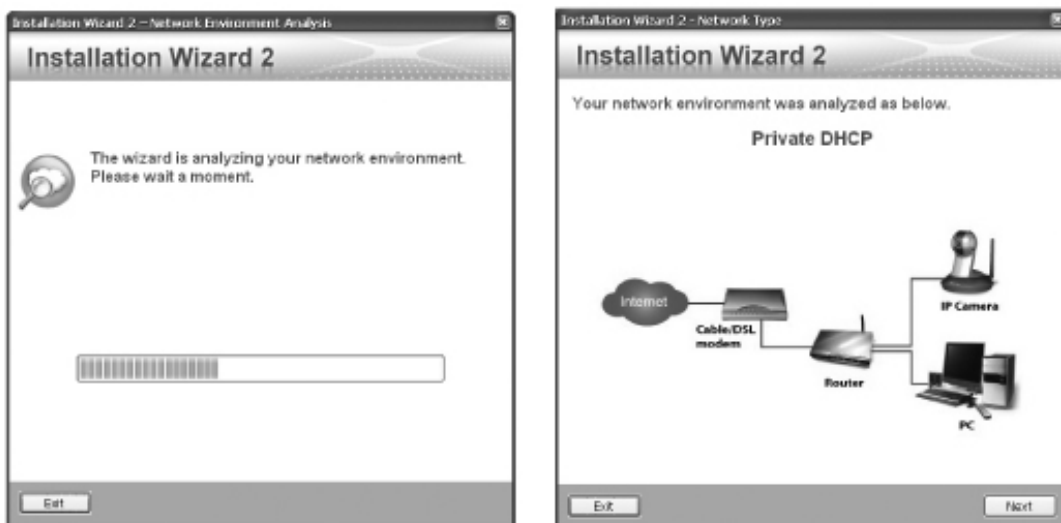


This serial number is same as Ethernet address,  
for example: 0002D1100052=00-02-D1-00-00-12

## B Assign IP address

### ● Using Installer program

1. Run the "Installation Wizard 2" under the Software Utility directory from software CD.
2. The program will do some analysis of your network environment, after your network was analyzed, please click on the "Next" button to continue the program.



3. The program will search the Vivotek Video Receivers, Video Servers or Network Cameras on the same LAN.
4. After searching, the main installer window will pop up. Click on the MAC that matches the one you just noted from the product label of your device to connect the Internet Explorer to the Video Server.





# 5

## The Internet Explorer Connects to the Network Camera



For further setup, please check the user's manual on the software CD.

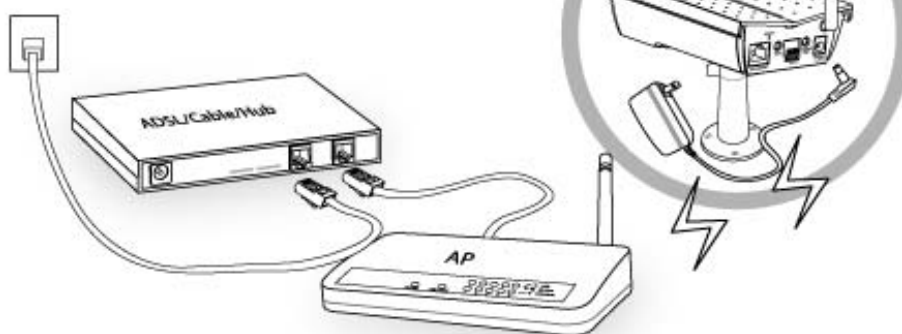
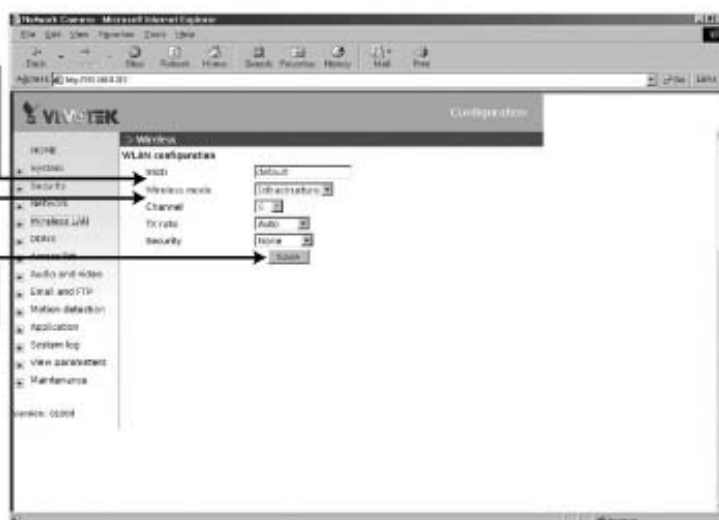
## 6 Set up Your Wireless Configuration for the Network Camera

1. Check the SSID currently set on your wireless access point (AP).
2. Go to IP7139's Configuration > Wireless LAN

3. Type in the SSID consistent with the setting on your AP.

4. Select the Wireless mode as "Infrastructure".

5. Click Save



### Note:

1. SSID abbreviated from Service Set Identifier is the name assigned to the wireless network. The IP7139's factory SSID setting is set to "default".
2. Select "Ad-Hoc" wireless mode if you want the IP7139 to communicate without using an AP or wireless router.

For setup further configuration, please check user's manual on the software CD.